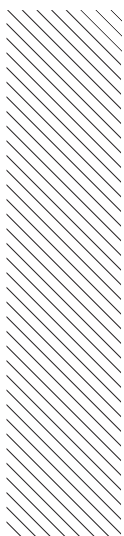


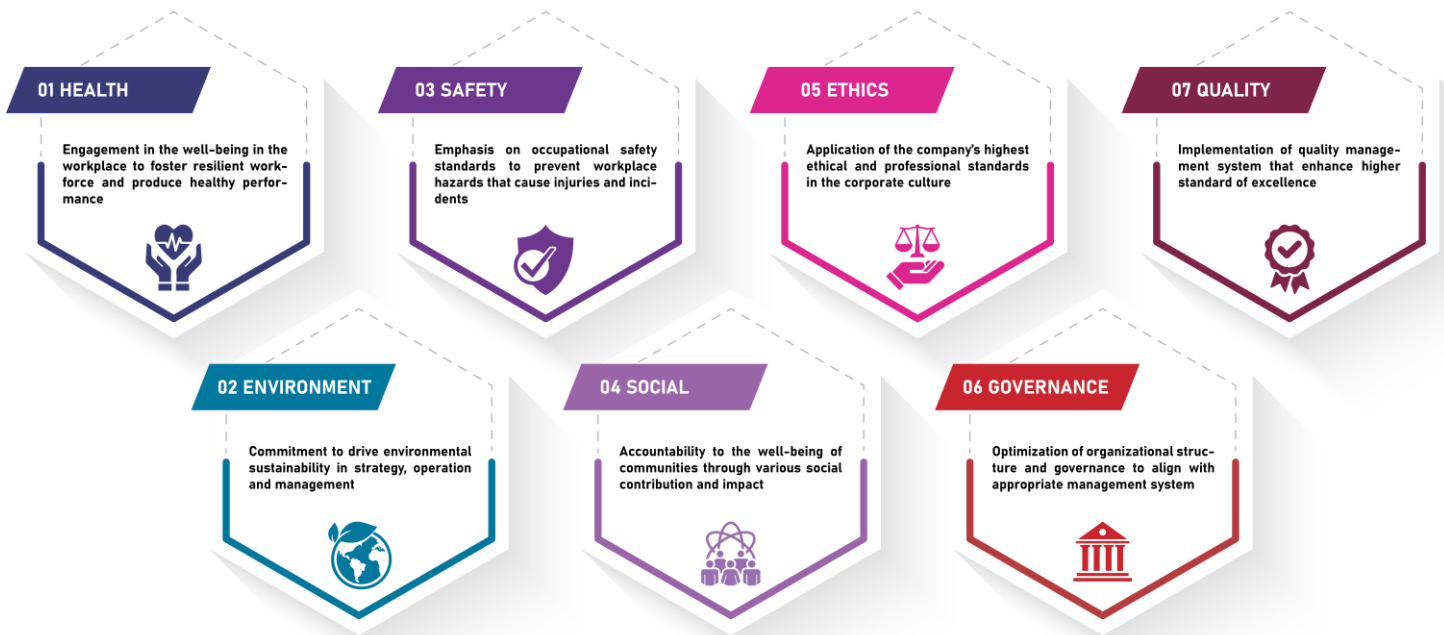


SUSTAINABILITY FRAMEWORK



FALGA believes strong sustainability proposition is linked to higher value creation for our business. We perceive this because sustainability in business is not just about corporate reputation and positive impact as it has now become a substantial driver of growth and value. We have been integrating sustainability approaches into our strategic and value-creation practices for almost 4 decades as we conducted projects and built various businesses. We now have our internal sustainability framework that consist of: Health, Safety, Environment, Social, Governance, Social and Ethics. We align our business practices with these 7 framework components to empower positive movement of our businesses.

SUSTAINABILITY FRAMEWORK



At FALGA, we take a holistic approach to sustainability to ensure that our businesses are operating in a responsible manner beyond regulatory requirements. As we started off as a construction company in 1986, we started adapting health, safety, and environment (HSE) practices, which are an integral part of sustainability in the construction industry. Over time, we began to also improve our governance by establishing clear policies, procedures for decision-making, risk management, and stakeholder engagement. Corporate Social Responsibility (CSR) initiatives has also become a crucial aspect that we focus on to ensure fair labor practices, community involvement and social development. We have been implementing and refining quality management systems especially as we executed strict quality requirements of major Indonesia State Owned Enterprises' (SOE) projects. Our company also establish ethical principles and values in guiding behavior and decision-making to ensure that we operate in integrity and respect.

ISO APPLICATION

- ❖ ISO 14001:2015 : Environmental Management System
- ❖ ISO 45001:2018 : Occupational Health and Safety Management System
- ❖ ISO 9001:2015 : Quality Management System
- ❖ ISO 37001:2015 : Anti Bribery Management System
- ❖ ISO 26000:2010 : Guidance on social responsibility

CORPORATE SOCIAL RESPONSIBILITY 2023

At FALGA GROUP, we strive to make a meaningful social impact in the communities where we operate through our Corporate Social Responsibility (CSR) program. We are deeply committed to provide community development support especially in rural areas & villages through various social initiatives that extend to multiple aspects of community development, including education, infrastructure, healthcare, and water sanitation.

Donation of Foster Children and School Renovation at Kuipon Village, Indonesia



Public Water Faucet & Torrent from Well, Jayapura, Indonesia



Public Restroom Renovation, Jayapura, Indonesia



At Falga Group, Corporate Social Responsibility (CSR) is ingrained in our core values. We are dedicated to making a lasting impact by investing in community development. By uplifting individuals, promoting education, improving infrastructure, and supporting healthcare and water sanitation initiatives, we strive to create a brighter and more sustainable future. Together, we can make a difference and inspire positive change in the world.